









LEER. NexStor Ram 1500 Installation Guide

Overall Display



NexStor Ram Installation Accessories Material Sheet

Accessory Kit Code	Product Code	Product Picture	Product Name	Product Quantity
A	1		Hexagon socket round head screw with washer M8*12	8
	2		Side connection bracket	4
B	1		Hexagon socket round head screw with washer M8*12	8
	2		Drawer system fixing bracket	4
C	1		Hexagon socket cap screw M8*30	12
D	1		European standard 30M6 slider nut	12
	2		M6 lifting ring	12
	3		Nylon washer	24

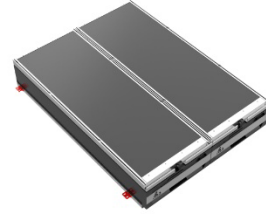
NexStor Ram TRX Installation Steps

Step 1
Using the **hexagon socket round head screws with washers M8*12**, fasten the **four side connection brackets** to both sides of the truck bed slide as shown in Figure ①.

The used accessory kit

Attachment photos

Accessory kit A



Figure①

Side connection bracket

Side connection bracket



Hexagon socket round head screw with washer M8*12

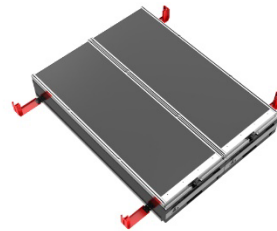
Hexagon socket round head screw with washer M8*12

Step 2
Using the **hexagon socket round head screws with washers M8*12**, fasten and secure the **four drawer system fixing brackets** to the side connection brackets as shown in Figure ②.

The used accessory kit

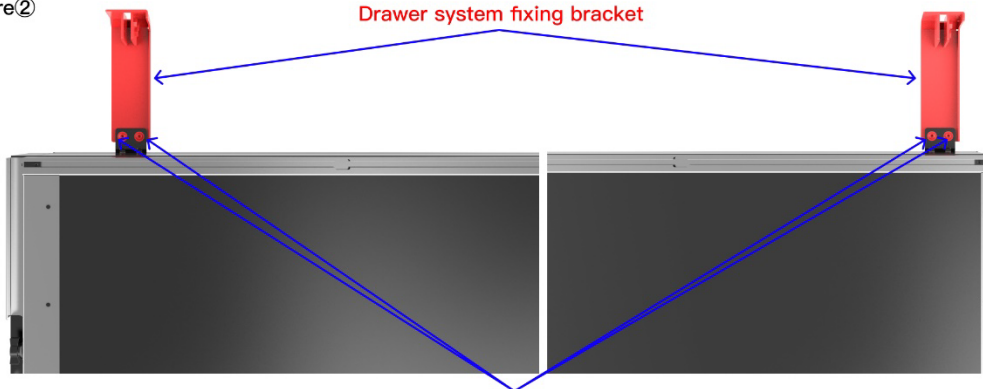
Attachment photos

Accessory kit B



Figure②

Drawer system fixing bracket



Hexagon socket round head screw with washer M8*12

NexStor Ram TRX Installation Steps

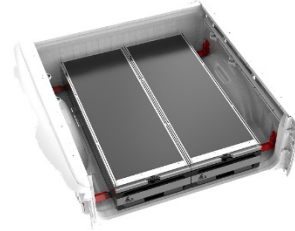
Step 3

Place the truck bed slide at the truck bed position as shown in Figure ③. Align the **drawer system fixing brackets** with the protruding handles of the truck bed, then fasten and secure the **drawer system fixing brackets** to the truck bed using the **hexagon socket cap screws M8*30**.

The used accessory kit

Attachment photos

Accessory kit C



Figure③

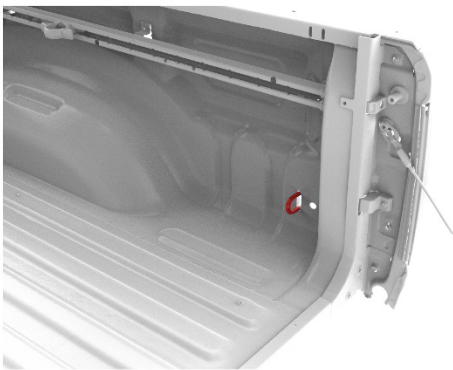
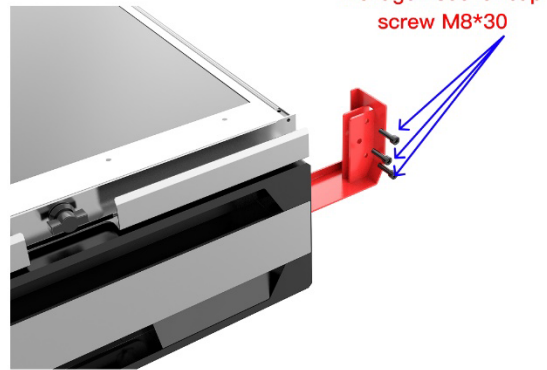


Figure of truck bed protruding handle



The truck bed is hidden in the figure.

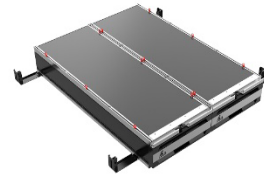
Step 4

Insert the **European standard 30M6 slider nuts** into the profile slots of the drawer system in the manner shown in Figure ④. Then, put the **M6*6 lifting rings** through the **nylon washers** and pre-tighten them with the **European standard 30M6 slider nuts**. Install a total of 12 sets. Tighten all screws, check the structural strength, and it is ready for safe use.

The used accessory kit

Attachment photos

Accessory kit D



Figure④

