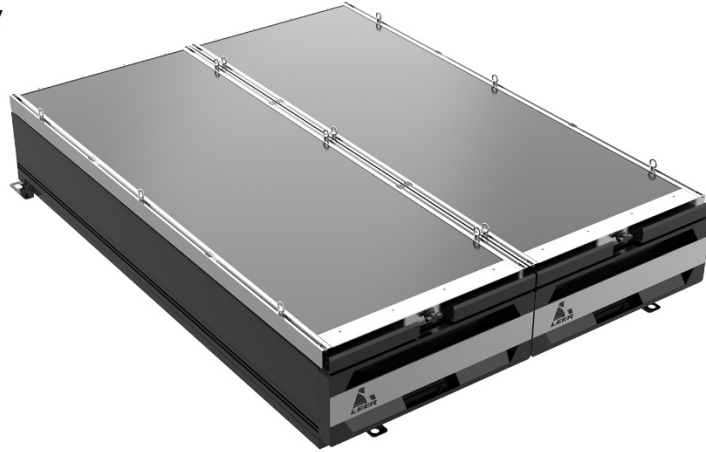



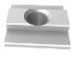




LEER NexStor F150 Installation Guide

Overall display



NexStor F150 Installation Accessories Material Sheet

Accessory Kit Code	Product Code	Product Picture	Product Name	Product Quantity
A	1		Rear connecting bracket	2
	2		Front connecting bracket	2
B	1		Hexagon socket round head bolt with washer M8*12	8
C	1		European standard 30M6 slider nut	12
	2		M6*6 lifting ring	12
	3		Nylon washer	12

NexStor F150 Installation Steps

Step 1
Remove the original screws at the pickup truck bed as shown in Figure ①.

/



original screws



original screws



Step 2
Install the **front and rear connecting brackets** at the original mounting holes using the **original screws** as shown in Figure ②, and tighten them preliminarily.

The used accessory kit

Attachment photos

Accessory kit A



Front connecting bracket



Front connecting bracket



Rear connecting bracket



Rear connecting bracket



NexStor F150 Installation Steps

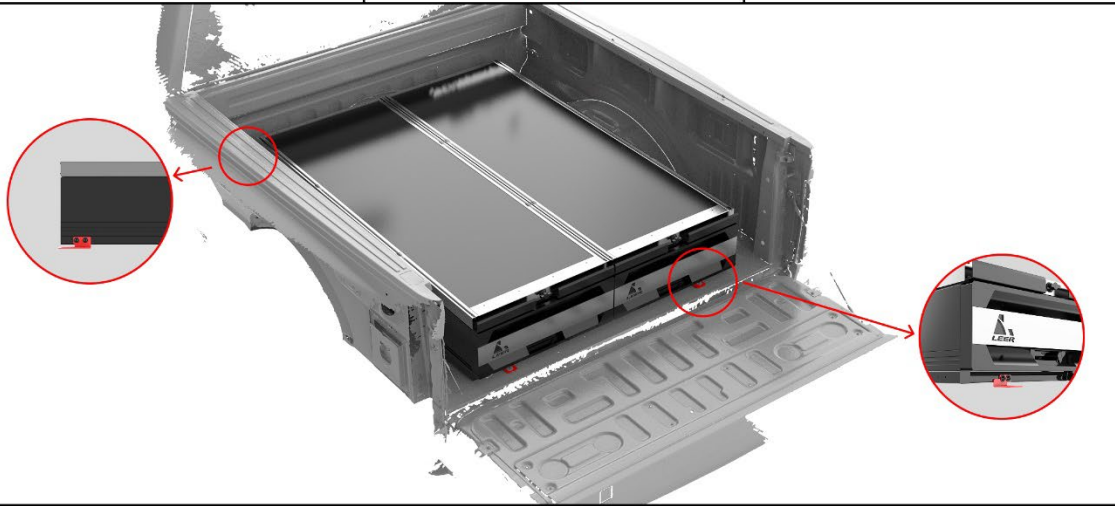
Step 3

Place the truck drawer system at the rear of the truck bed as shown in Figure ③, and fix the brackets to the truck drawer system using **hexagon socket round head bolts with washers M8*12** at the positions indicated in the figure.

The used accessory kit

Attachment photos

Accessory kit B



Step 4

As shown in Figure ④, insert the **European standard 30M6 slider nuts** into the profile slots of the truck drawer system. Slide the **M6*6 lifting rings** through the **nylon washers**, then tighten them onto the **European standard 30M6 slider nuts**. Install a total of 12 sets of the above assembly. Tighten all screws, check the strength, and feel free to use it.

The used accessory kit

Attachment photos

Accessory kit C

