














LEER NexStor Silverado Installation Guide

Overall display



**NexStor Silverado Installation
Accessories Material Sheet**

Accessory Kit Code	Product Code	Product Picture	Product Name	Product Quantity
A	1		Hexagon Socket Round Head Bolt with Washer M8*12	8
	2		Front Connection Support	2
	3		Rear Connection Support	2
B	1		Middle Connection Support	2
	2		Hexagon Socket Round Head Bolt with Washer M8*12	4
C	1		Rear Connection Bracket	2
	2		Front Connection Bracket (Right)	1
	3		Front Connection Bracket (Left)	1
	4		Hexagon Socket Round Head Bolt with Washer M8*16	8
D	1		Hexagon Socket Cap Screw (Black) MBX30	10
E	1		European Standard 30M6 Slide Nut	12
	2		M6*6 Lifting Ring	12
	3		Nylon Washer	12

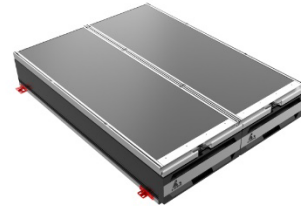
NexStor Silverado Installation Steps

Step 1
Install the **front and rear connection supports** on both sides of the truck drawer system using hexagon socket round head bolts with washers M8*12 as shown in Figure ①.

The used accessory kit

Attachment photos

Accessory kit A

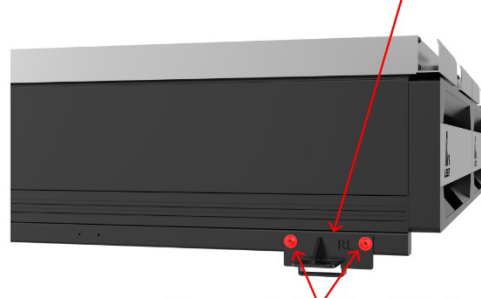


Front Connection Support



Hexagon Socket Round Head Bolt with Washer M8*12

Rear Connection Support



Hexagon Socket Round Head Bolt with Washer M8*12

Step 2
Install the **middle connection supports** on the front and rear ends of the truck drawer system using hexagon socket round head bolts with washers M8*12 as shown in Figure ②. Then place the truck drawer system in the truck bed.

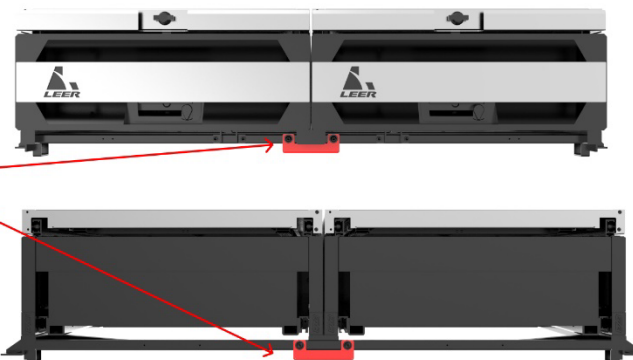
The used accessory kit

Attachment photos

Accessory kit B



Middle Connection Support



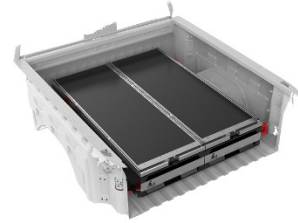
NexStor Silverado Installation Steps

Step 5
Fix the **connection brackets** to the truck bed using **hexagon socket cap screws M8X30** as shown in Figure ⑤.

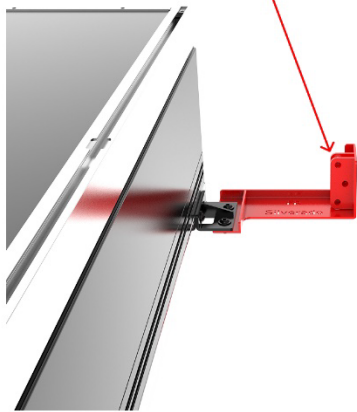
The used accessory kit

Attachment photos

Accessory kit D



hexagon socket cap screws M8X30



hexagon socket cap screws M8X30

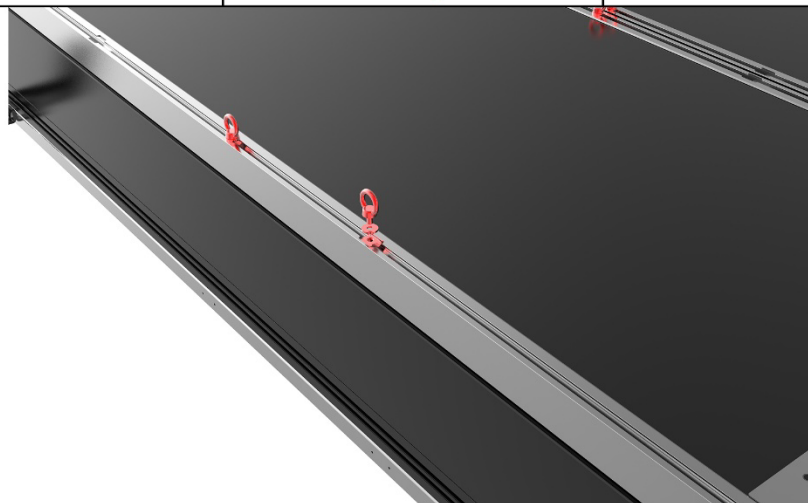
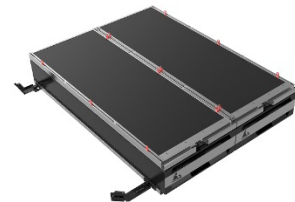


Step 6
As shown in Figure ⑥, insert the **European standard 30M6 slider nuts** into the profile slots of the truck drawer system. Fit the **M6*6 lifting rings** with **nylon washers** and pre-tighten them with the **European standard 30M6 slide nuts**. Install a total of 12 sets of the above assembly. Tighten all screws, check the strength, and feel free to use it.

The used accessory kit

Attachment photos

Accessory kit E



NexStor Silverado Installation Steps

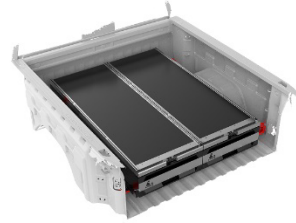
Step 3

Install the **rear connection brackets** onto the **rear connection supports** using **hexagon socket round head bolts with washers M8*16** as shown in Figure ③.

The used accessory kit

Attachment photos

Accessory kit C



Hexagon Socket Round Head Bolt with Washer M8*16



Step 4

Secure the **front connection brackets** to the **front connection supports** using **hexagon socket round head bolts with washers M8*16** as shown in Figure ④. (Note the shape and orientation of the front connection brackets.) Adjust the entire brackets to fit into the corresponding positions of the truck bed.

The used accessory kit

Attachment photos

Accessory kit C

